

MONTHLY PROGRESS REPORT FOR CONTRACT NO. 500-00-036

PROJECT 2.1 – ENHANCED LANDFILL GAS PRODUCTION USING BIOREACTORS

REPORT PREPARED BY: COMMONWEALTH ENERGY TEAM

July 2003

Contractor Project Director:	Patrick Lilly (360) 906-0616
Contractor Project Manager:	Bill Kitto (503) 235-5022
Commission Project Manager:	Zhiqin Zhang (916) 654-4063

What we planned to accomplish this period:

The primary focus of activity in July will be the completion of the draft Waste Characterization report for the Mid-Valley landfill in Fontana, San Bernardino County. Information on waste streams in the region, which were requested in May, became available in June and it is anticipated that the report will be completed in early to mid July.

As a follow-up to the Yolo County site visit and meeting held in Sacramento in June, it is anticipated that meetings will be held with San Bernardino County and BAS staff in July. The primary purpose of these meetings will be to review the design and status of the Mid-Valley landfill to assure that its design is adaptable to a bioreactor concept. It is also anticipated that the landfill operator, Burtech, will be participating in these meetings as well. Further, it is expected that information will be exchanged at these meetings, which will pave the way for efficiently developing a bioreactor at the Mid-Valley landfill site.

What we actually accomplished this period:

Task 2.1.1 Characterize Waste to be Placed in Bioreactor:

- In July, data collection activities were completed in support of preparation of the Waste Characterization Report. Data were received from San Bernardino County and it was supplemented with data obtained from statewide sources. The report was completed and made available to senior team reviewers prior to its transmittal to the Energy Commission.

How we are doing compared to our plan:

Work is generally proceeding as anticipated. An important challenge is gaining regulatory acceptance of the bioreactor landfill project. As part of this EPA activity to implement an

R&D exemption for bioreactors is being closely followed by the CE Team. This regulation will be very important in successfully permitting the bioreactor project. Developments in this area are being closely followed. Also important on this project is the development of an approach involving key stakeholders in San Bernardino County and elsewhere for such a project. Staff from the County, its operator and engineer as well as the Regional Water Quality Control Board, Santa Ana Region, the Energy Commission and various other State and local entities were consulted and contributed valuable input to the development of the project. Clearly, it is very important to keep all key stakeholders involved in the formulation of the project as it moves forward.

Significant problems or changes:

There are no significant fiscal problems to report during this period and work is proceeding within Project budget. Progress and expenditures will result in the project being completed on time and within budget.

What we expect to accomplish during the next period:

On Project 2.1, a primary focus of activity will be developing conceptual design information on the Mid-Valley bioreactor project. Such information is needed for the meeting with the Water Quality Control Board; Santa Ana Region scheduled for late August. This information will be developed and reviewed with various entities involved in the Project and then discussed at a meeting planned to be held in San Bernardino County. This same information will also be valuable for the Project 2.1 TAC and CPR meetings scheduled for September. It is also anticipated that efforts on completing the Waste Characteristic Report will be undertaken, including the incorporation of comments as they are received from the Commission and TAC members.

Status of Milestones and Deliverables:

Table 1 below summarizes the status of Project 2.1 task deliverables as of the end of the current reporting period.

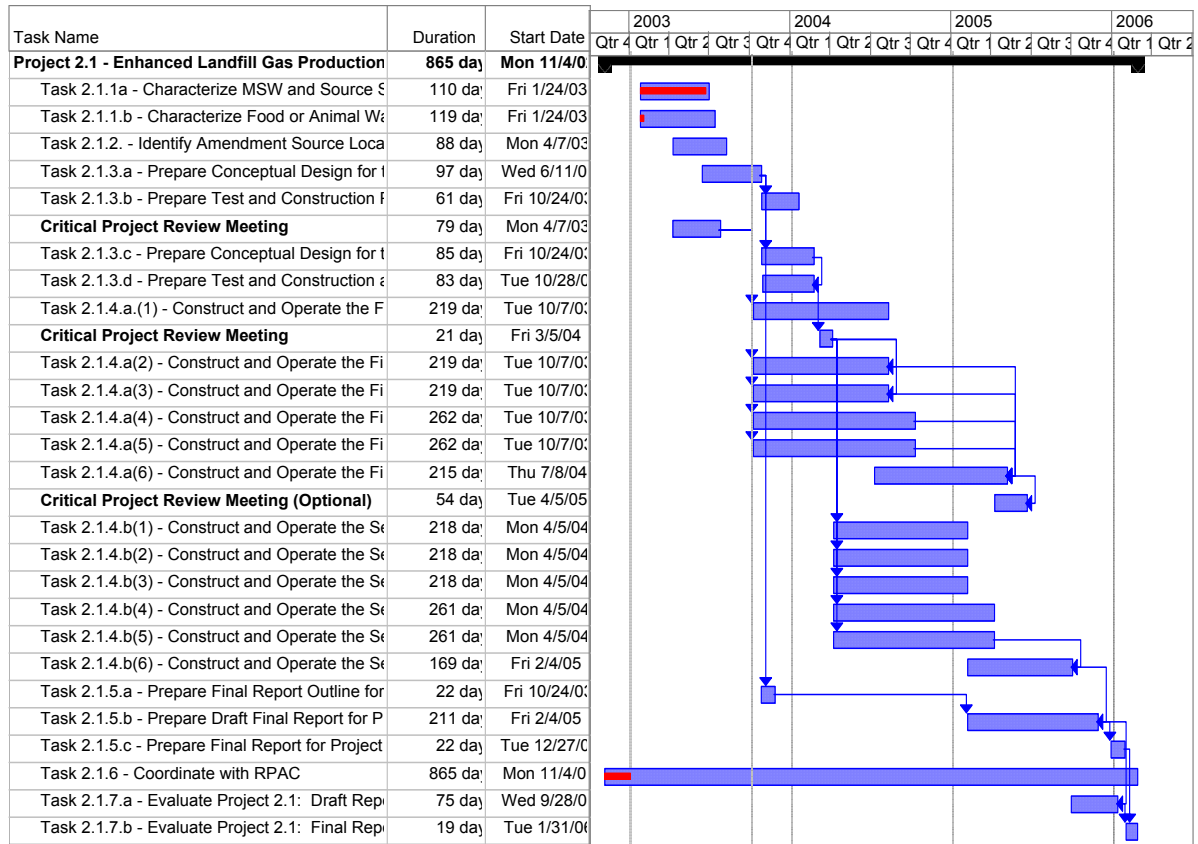
Table 1: Summary of Project Status and Deliverables – Project 2.1

Task No.	Description	Start Date		Due Date		Status (%)
		Planned	Actual	Planned	Actual	
2.1.1a	Characterize MSW and Source Separated Organic Waste To Be Placed in Both Bioreactors	04/07/03	1/24/03	08/21/03		95%
2.1.1b	Characterize Food or Animal Wastes to be Placed as Amendment in the Second Bioreactor	04/07/03	1/24/03	On Hold		5%
2.1.2	Identify Amendment Source Locations for the Second Bioreactor	04/07/03		On Hold		
2.1.3a	Prepare Conceptual Design for the First Bioreactor	08/06/03		12/18/03		
2.1.6	Coordinate with Renewables Project Advisory Committee/TAC Critical Project Review meeting	04/07/03		04/26/06		5%

Explanation of any Difference(s) in Schedule:

Task 2.1.1a – Landfill Feedstock Characterization Report – Information needed to complete this report took longer to collect than anticipated, as the primary data to be used was not available in an electronic format. This delay will not further affect the overall schedule for the project, as that is being affected by the issuance of an R&D exemption mentioned above and other project developments that could affect the overall development of the bioreactor.

Overall Schedule for Project 2.1:



Overview of Fiscal Status:

Table 2 below summarizes the fiscal status of Project 2.1 by task as of the end of the current reporting period.

Table 2: Fiscal Status By Task – Project 2.1

Task Number	Budget	Invoiced To-Date	Fiscal Status *
2.1.1 a	\$52,117	\$0	OT
2.1.1 b	\$53,064	\$0	OT
2.1.2	\$40,476	\$0	OT
2.1.3 a	\$103,578	\$0	OT
2.1.6	\$0	\$0	OT

*Fiscal Status – Please indicate if you are “On Track” (OT), OverBudget (OB), or UnderBudget (UB)